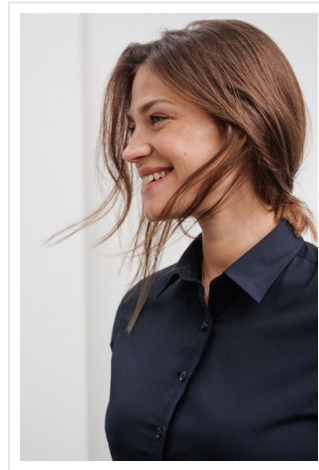
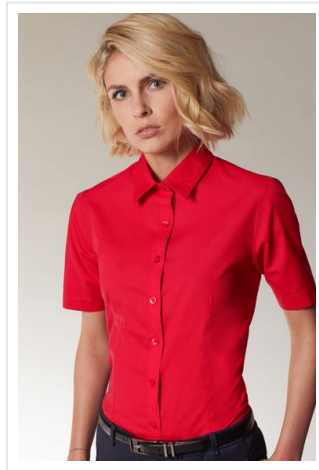




JN679 Ladies Shirt Shortsleeve Poplin

- Klassieke polo van easy care gemengde stoffen.
- Poplin met easy care finish.
- Afgeronde zoom.
- Getailleerde vrouwelijke snit.
- Bedruk of borduur naar wens.



Beschikbare maten

XS **S** **M** **L** **XL** **XXL** **3XL**

Beschikbare kleuren

| | | | |
|-------------------------|-----------------------|-----------------------|-----------------------|
| aqua (PMS: 279) | brown (PMS: 476) | carbon (PMS: 425U) | yellow (PMS: 101) |
| Irish green (PMS: 3415) | light blue (PMS: 649) | light grey (PMS: 400) | light pink (PMS: 196) |
| lime green (PMS: 360) | navy (PMS: 296) | orange (PMS: 1575) | red (PMS: 200) |
| royal (PMS: 301) | steel (PMS: 423U) | stone (PMS: 7501) | tomato (PMS: 186) |
| turquoise (PMS: 312) | wine red (PMS: 195) | white (PMS: -) | black (PMS: black) |



Specificaties

| | |
|------------------------------------|---------------------------|
| Merk | Jack & Nicholson |
| Categorie | Overhemden |
| Artikelcode | JN679 |
| Grammage (gr/m²) | 105 |
| Gewicht | 0 gr |
| Materiaal | 50% of meer polyester |
| Aantal in binnenverpakking | 5 |
| Artikelen in omdoos | 20 |
| Land van herkomst | Bangladesh |
| Mogelijke bewerkingen | Embroidery, Transferprint |