



## JN677 Ladies Shirt Longsleeve Poplin

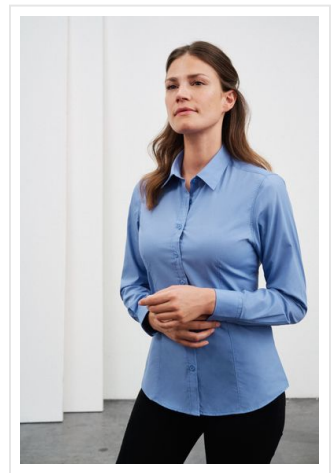
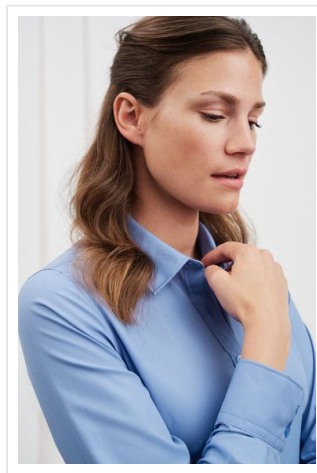
Klassiek overhemd van easy care gemengde stoffen.

Poplin met easy care afwerking.

Afgeronde zoom.

Vrouwelijk gesneden snit.

Bedruk of borduur naar wens.



### Beschikbare maten

XS S M L XL XXL 3XL

### Beschikbare kleuren

- |                       |                       |                         |                       |
|-----------------------|-----------------------|-------------------------|-----------------------|
| carbon (PMS: 425U)    | yellow (PMS: 101)     | Irish green (PMS: 3415) | light blue (PMS: 649) |
| light grey (PMS: 400) | light pink (PMS: 196) | lime green (PMS: 360)   | navy (PMS: 296)       |
| orange (PMS: 1575)    | red (PMS: 200)        | royal (PMS: 301)        | steel (PMS: 423U)     |
| stone (PMS: 7501)     | tomato (PMS: 186)     | turquoise (PMS: 312)    | wine red (PMS: 195)   |
| white (PMS: -)        | black (PMS: black)    | aqua (PMS: 279)         | brown (PMS: 476)      |



## Specificaties

<b>Merk</b>	Jack & Nicholson
<b>Categorie</b>	Overhemden
<b>Artikelcode</b>	JN677
<b>Grammage (gr/m<sup>2</sup>)</b>	105
<b>Gewicht</b>	0 gr
<b>Materiaal</b>	50% of meer polyester
<b>Aantal in binnenverpakking</b>	5
<b>Artikelen in omdoos</b>	20
<b>Land van herkomst</b>	Bangladesh
<b>Mogelijke bewerkingen</b>	Embroidery, Transferprint